

Brief History of PHR

1992-2005

The early year(s)

- **1992:** New Dean Fred Murphy appoints 6 “Task Forces” to develop a 6-department model from the existing 11-department structure.
- A 6-9 month “Musical Chairs” begins, with all faculty free to circulate amongst all Task Forces to find a departmental “home”.



Early years (cont)

- **Fall, 1993:** The music stops, and everyone has to find a seat. A new Department is declared, and contains elements of at least four (4) of the “old” departments, including
- **Epidemiology and Preventive (EPM)**
- **Reproduction**
- **Medicine**
- **Pathology**

Fall, '93 to Fall '94:

- “Circling and sniffing” (CA Hjerpe)
- Identity challenge/ Letterhead chaos –
What’s in a name?

• <u>Year</u>	<u>Name chosen</u>	<u>Approx hours spent on name selection</u>
• 1993	Preventive Veterinary Medicine	36?
• 1994	Population Health & Reproduction	72?

Workable groupings

- Three informal “sections” are created, based on subject matter.
 - These have no budget, no autonomy, but are clusters of faculty with similar interest who can speak on behalf of that interest to the whole department.
- 1. **Public Health and Quantitative Veterinary Medicine**
- 2. **Reproductive Biology & Genetics** (Includes 84% of former Repro Dept)
- 3. **Production Medicine** (includes all VMTRC faculty in 1 dept for first time, + 3 Davis clinicians)

Fall 94-Spring '95

- Medicine becomes Medicine and Epidemiology (VME)
- PHR size Total FTE: about 13
 Total bodies: about 20
- PHR's FTE Wish-list highlights
 - Small Animal Theriogenologist
 - Food Safety Expert
 - Genetics/Genomics Expert

1994-2005: PHR Growth/New faculty

Academic Senate

- **Dean Cliver**, Food Safety
- **Al Conley**, Endocrinology/ Reprod Biol
- **Barry Ball**, Equine Repro,
• SVM's first Endowed Chair (J Hughes Chair)



More growth

Senate faculty

- **Lynette Corbeil**, UCSD
 - Repro immunol ; admin.,
 - UC Vet Med. Ctr, San Diego
- **Jerry Tannenbaum**
 - Veterinary Law and Ethics



Michaelangelo's Symbol of Excellence

VMTRC faculty added (Senate)

- **Bill Sischo**, VMTRC –
 - epi of dairy microbes



- **Dale Moore**, VMTRC – Outcomes assess.



- **Jose Santos**, VMTRC –
 - Clin Nutrition



PHR growth (cont.)

- CAHFS poultry diagnostic faculty

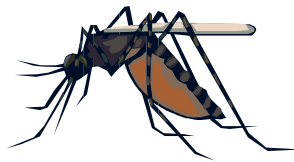


–Chin, Woolcock, Charlton



More growth

- Mosquito Research – **G. Lanzaro** (AES)



Genetics/Genomics

The all XX team

- Leslie Lyons



- Danika Bannasch



- Holly Ernest



More growth

Academic Federation Faculty

- **Carol Cardona** (Poultry) – AES/CE
- **Joan Jeffrey** (Poultry) – AES/CE



- **Rob Atwill** (VMTRC-Beef/environment)

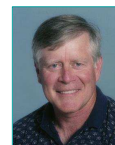


- **McCowan** (VMTRC- Anim Behavior)



Lecturers

- **Lane** (Food Animal Reproduction)*



- **Hajmeer** (Food Safety)



- *Position redefined: now in the Acad Senate series

Latest Count: PHR

- Academic senate faculty: 26
 - Academic Federation faculty 4
 - TOTAL FACULTY 30
 - Growth, 1994-2005: ~100%
-
- FTE Wish list highlights:
 - Small Animal Theriogenologist
 - Stem cell expert? OR part of a stem cell team?
 - ART, to reach across species barriers?
 - Domestic dogs and African wild dogs
 - Domestic cats and several felid species